

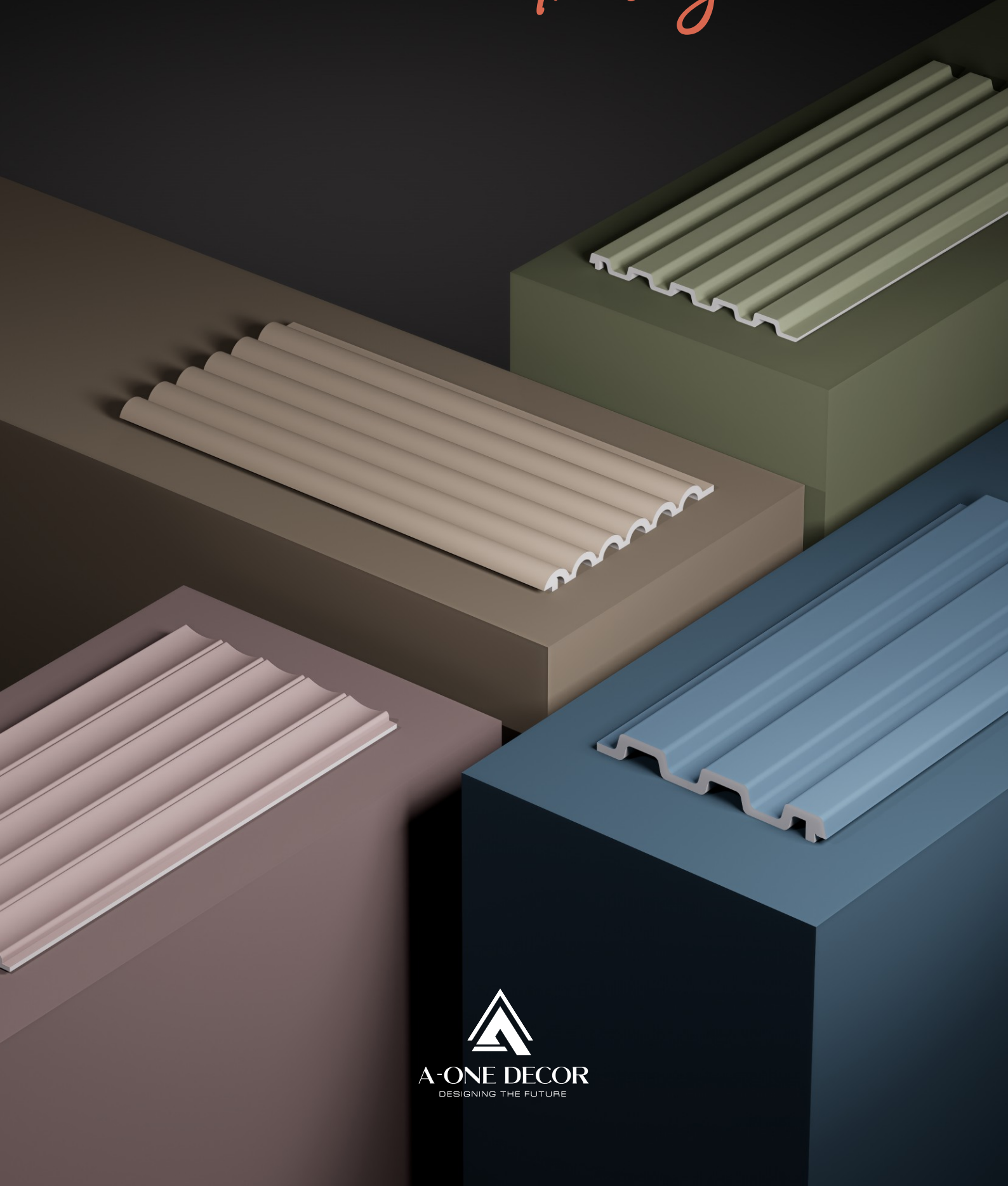


**A-ONE DECOR**  
DESIGNING THE FUTURE



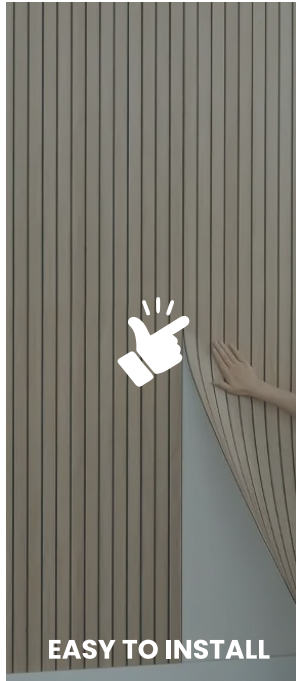
**The Pastel**  
*Theory*

# The Pastel *Theory*

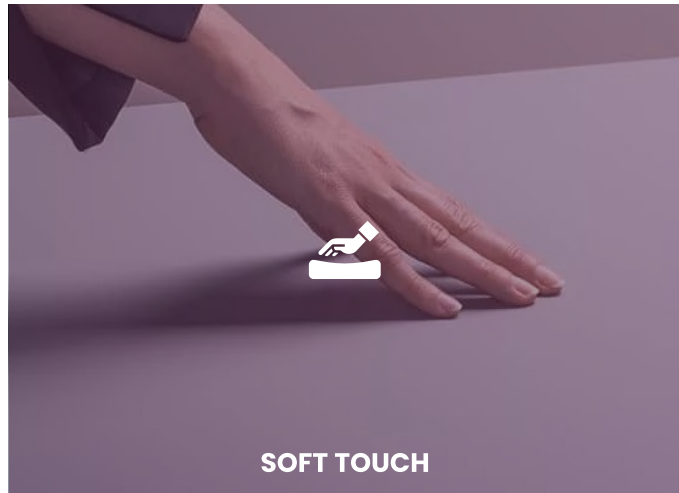


A-ONE DECOR  
DESIGNING THE FUTURE

# Features



Pastel Cladding combine elegance with strength anti-bacterial, waterproof, termite-proof, and scratch-resistant. With a soft-touch finish, eco-friendly build, and easy care, they make interiors stylish and lasting.



## The Pastel Theory



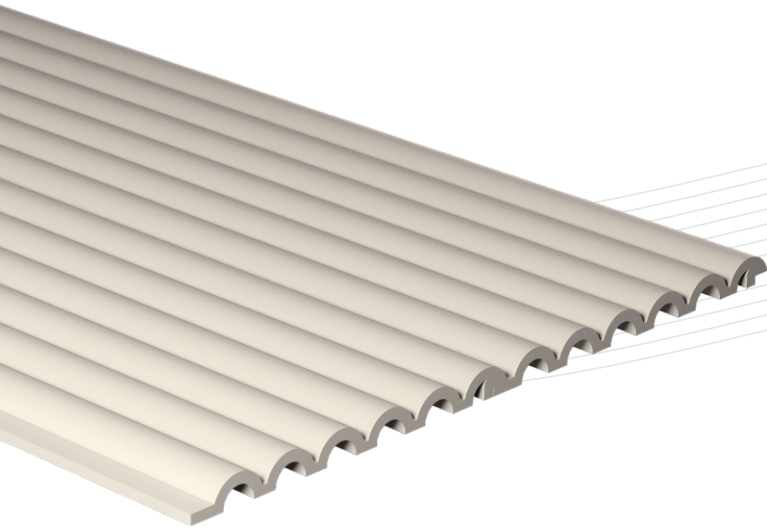
# The Pastel *Theory*





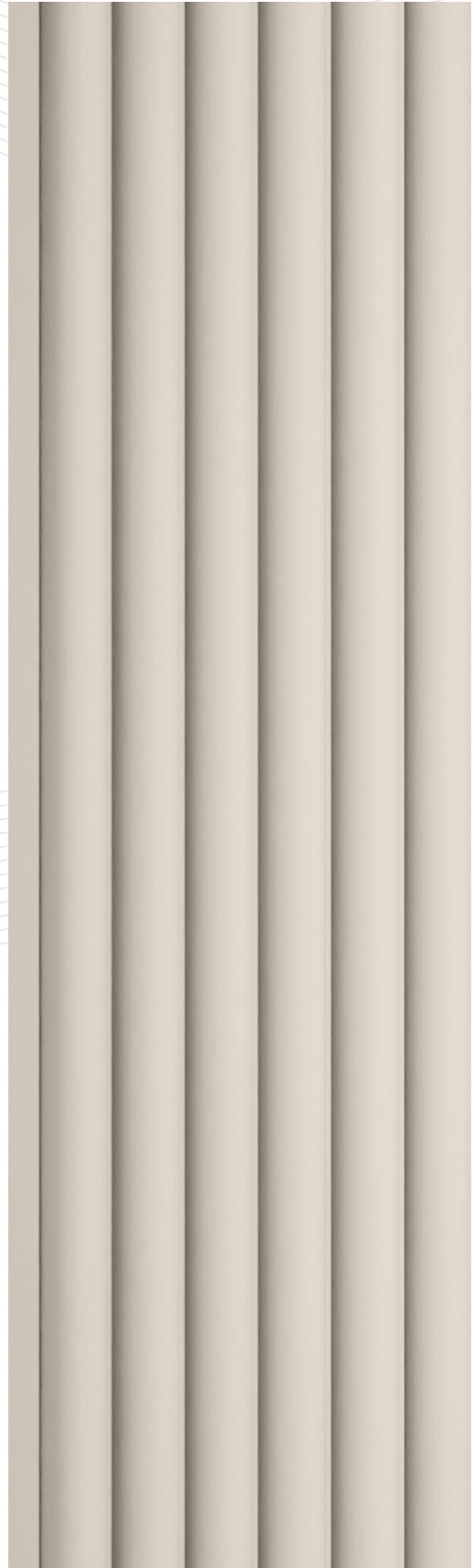
# The Pastel *Theory*

PT 5001



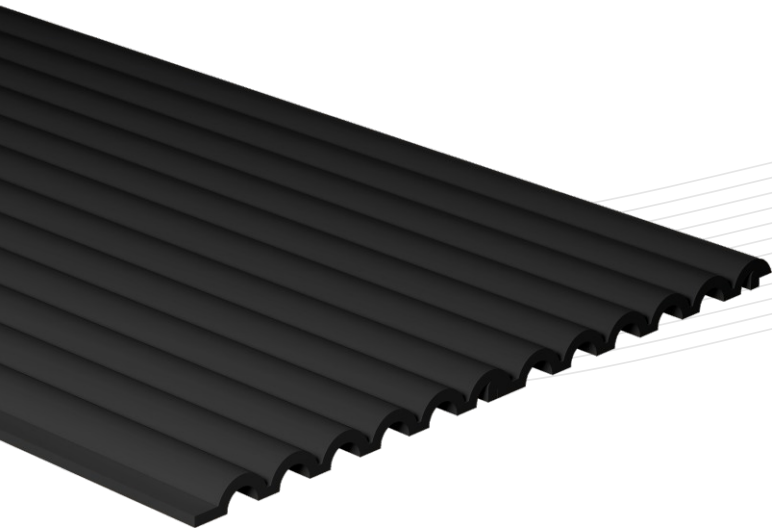
**2.9**  
Meter (H)  
**120**  
MM (W)

Thickness  
12mm (+/-5%)



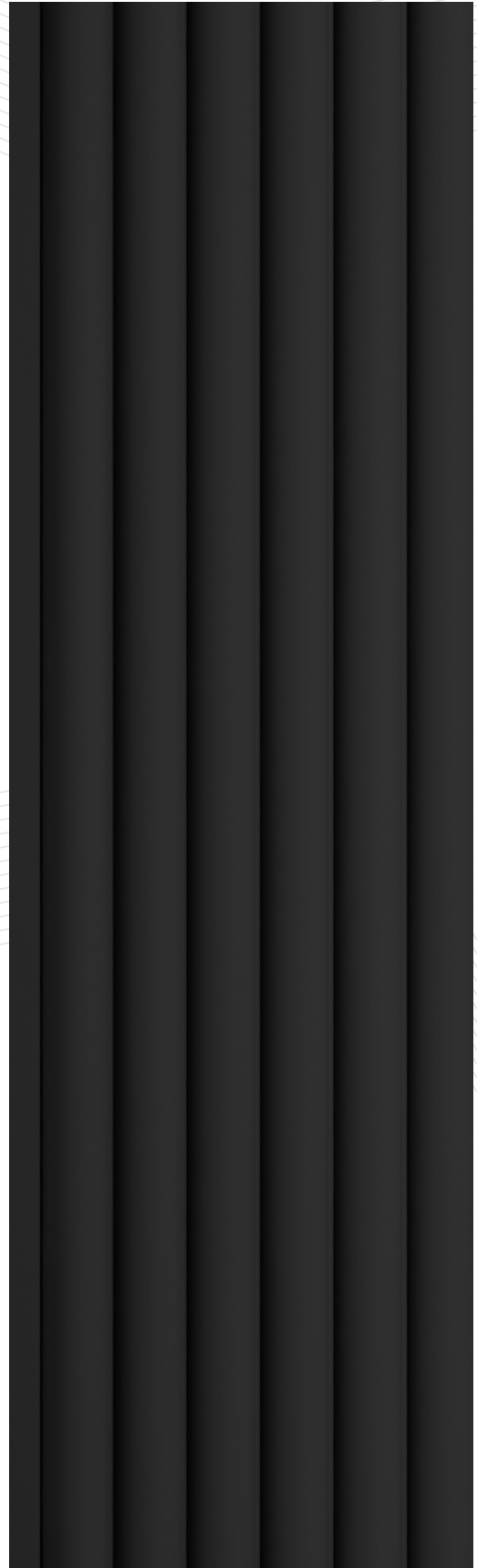
# The Pastel *Theory*

PT 5002



**2.9**  
Meter (H)  
**120**  
MM (W)

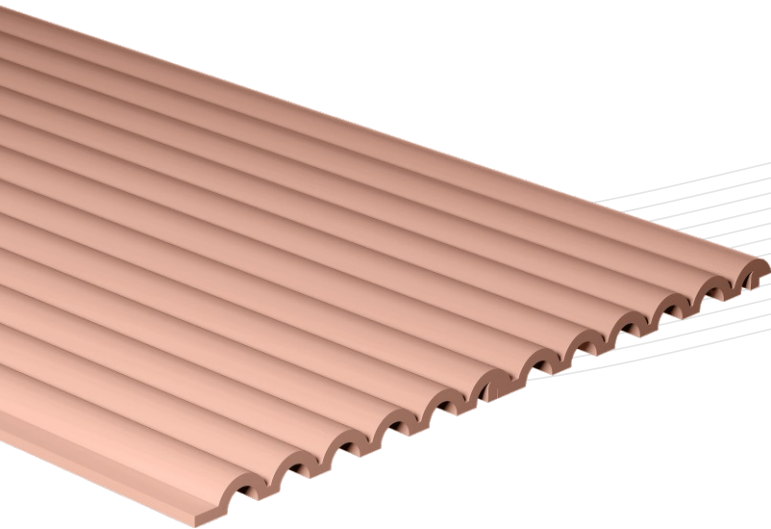
Thickness  
12mm (+/-5%)





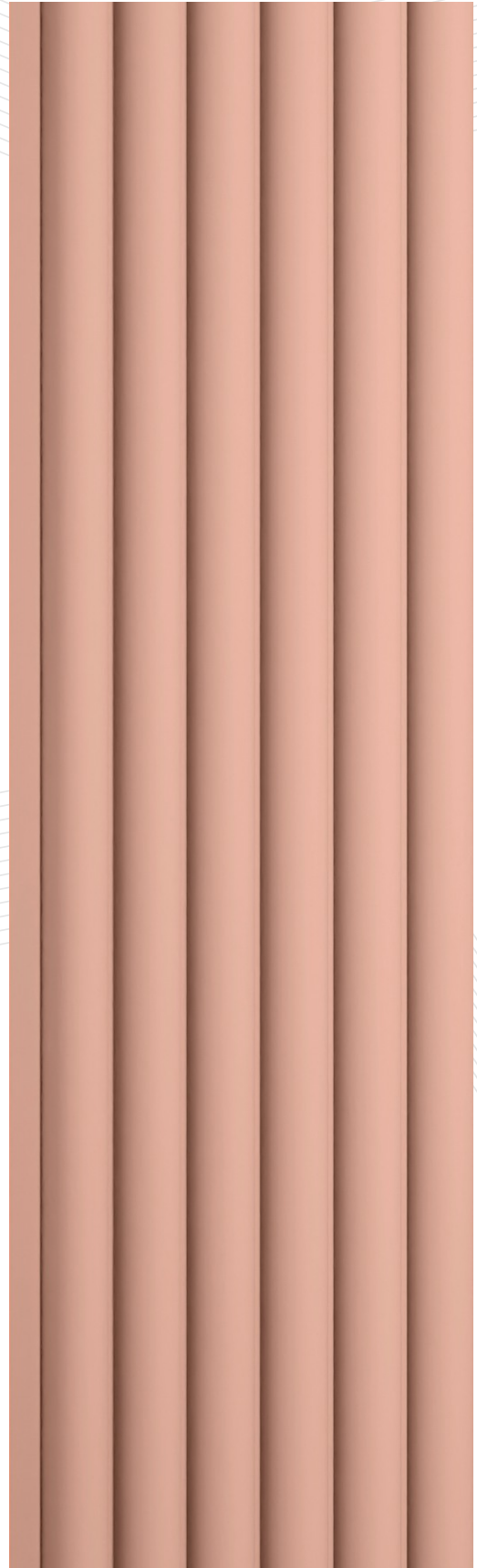
# The Pastel *Theory*

PT 5003



**2.9**  
Meter (H)  
**120**  
MM (W)

Thickness  
12mm (+/-5%)



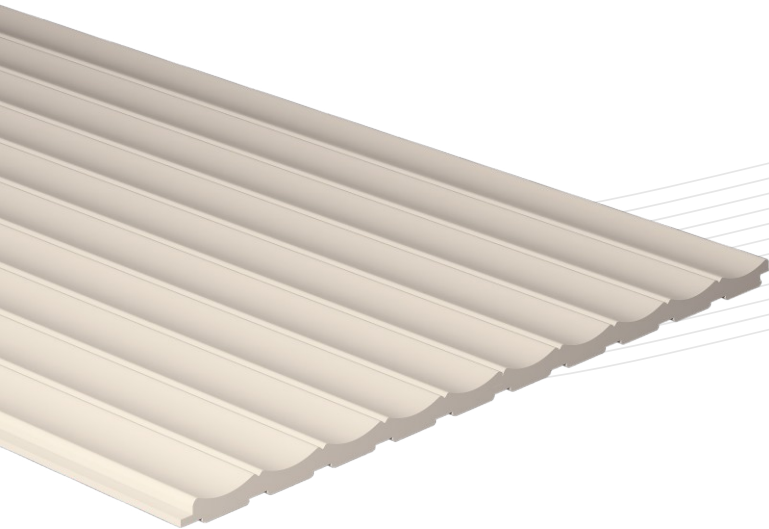
# The Pastel *Theory*





# The Pastel *Theory*

PT 5004



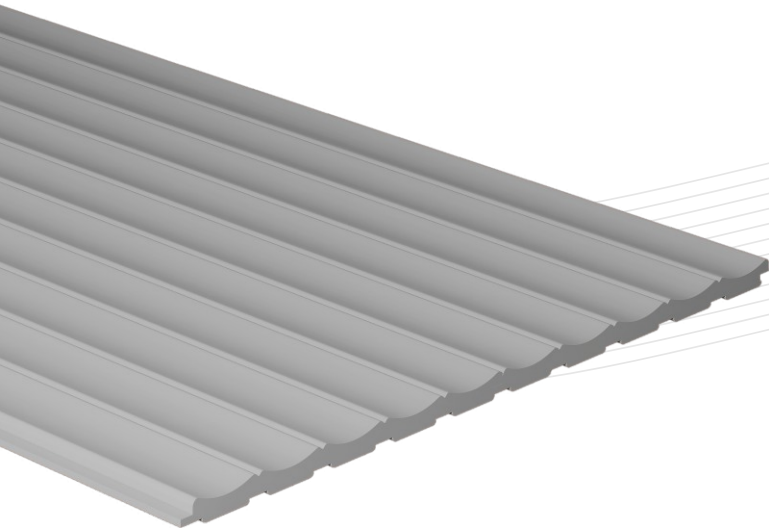
**2.9**  
Meter (H)  
**120**  
MM (W)

Thickness  
12mm (+/-5%)



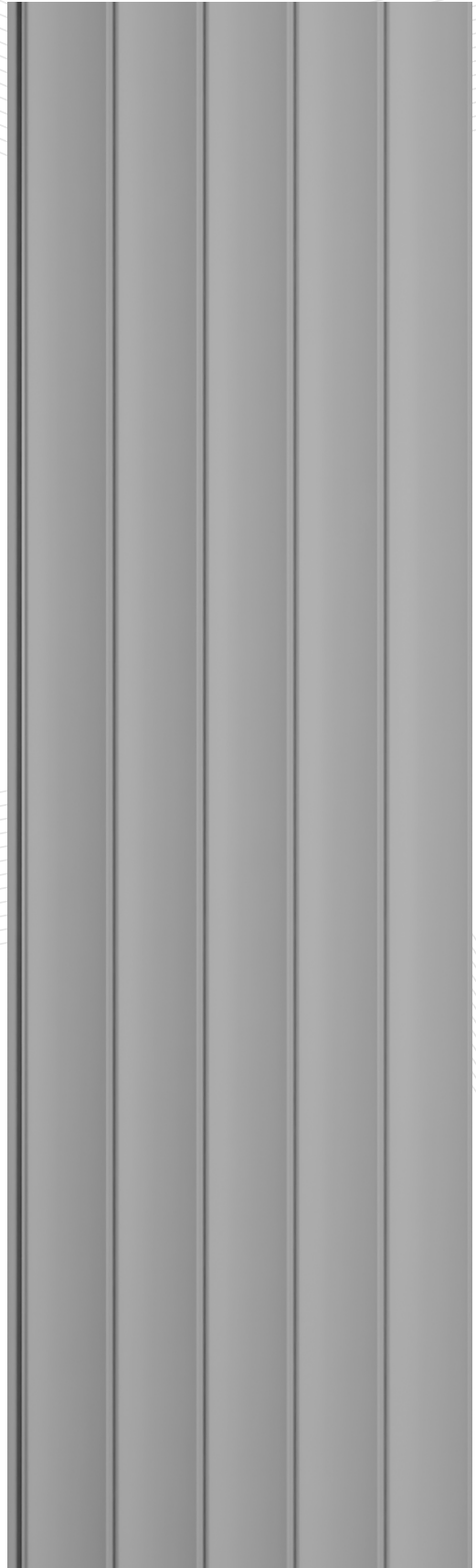
# The Pastel *Theory*

PT 5005



**2.9**  
Meter (H)  
**120**  
MM (W)

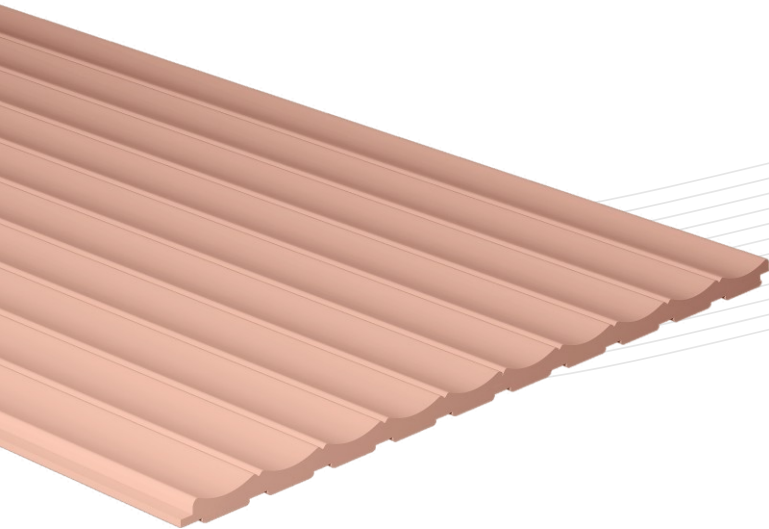
Thickness  
12mm (+/-5%)





# The Pastel *Theory*

PT 5006

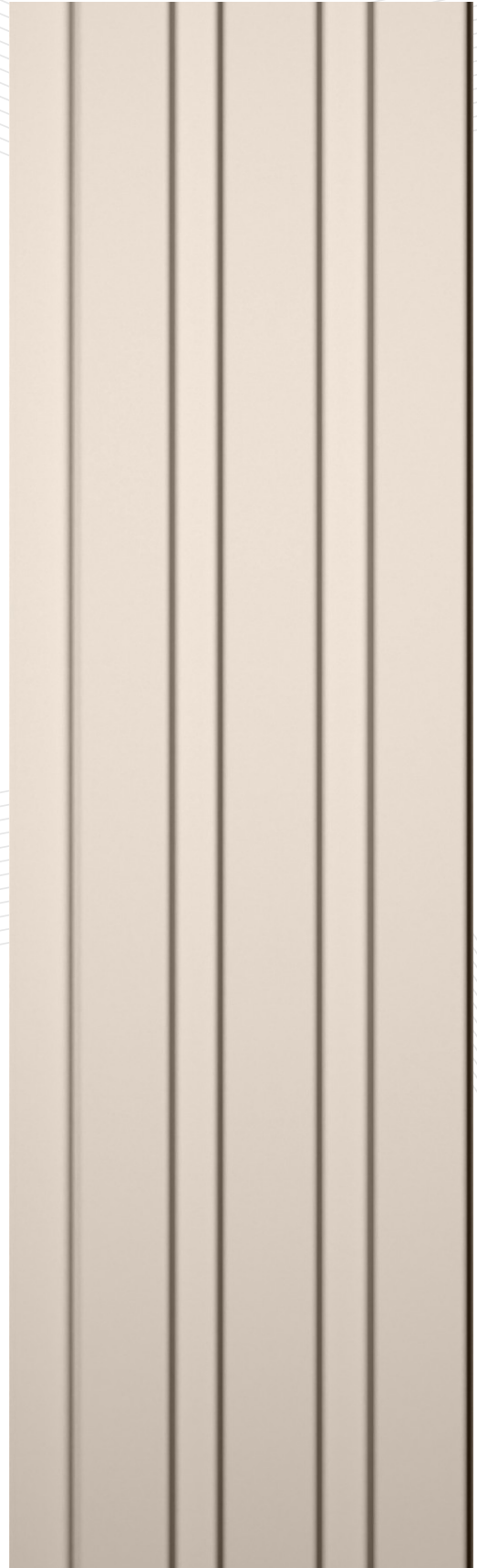
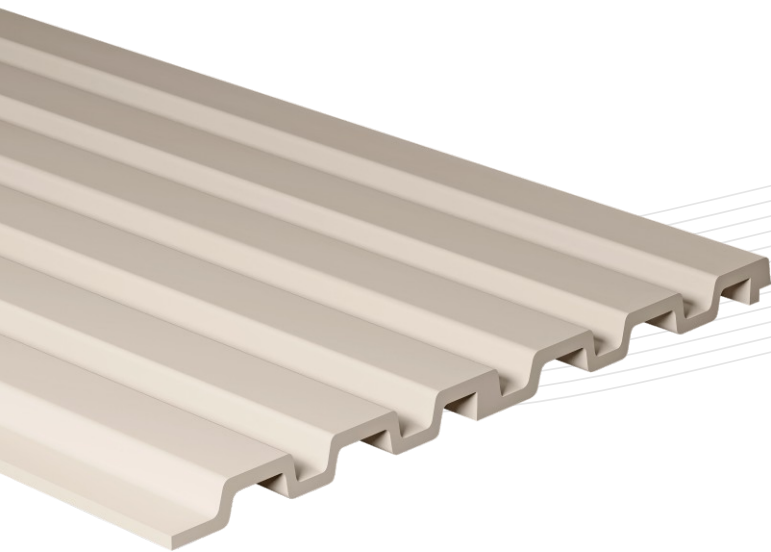


**2.9**  
Meter (H)  
**120**  
MM (W)

Thickness  
12mm (+/-5%)

# The Pastel *Theory*

**PT 5007**



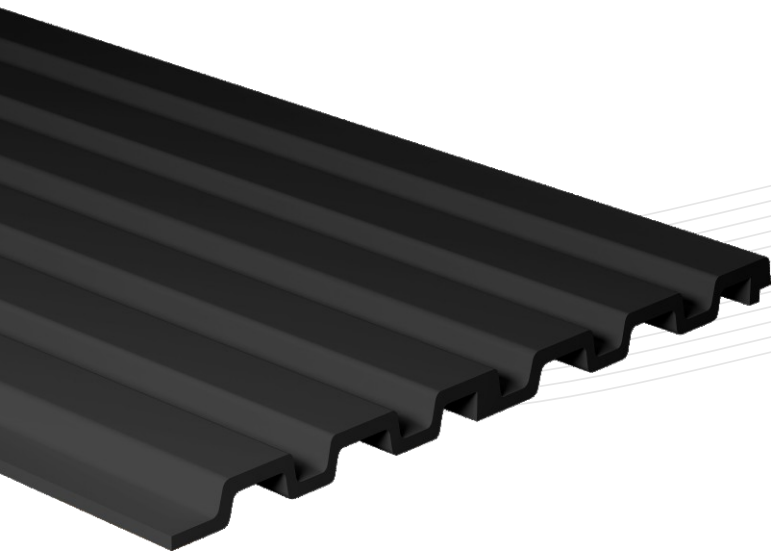
**2.9**  
Meter (H)  
**120**  
MM (W)

Thickness  
12mm (+/-5%)



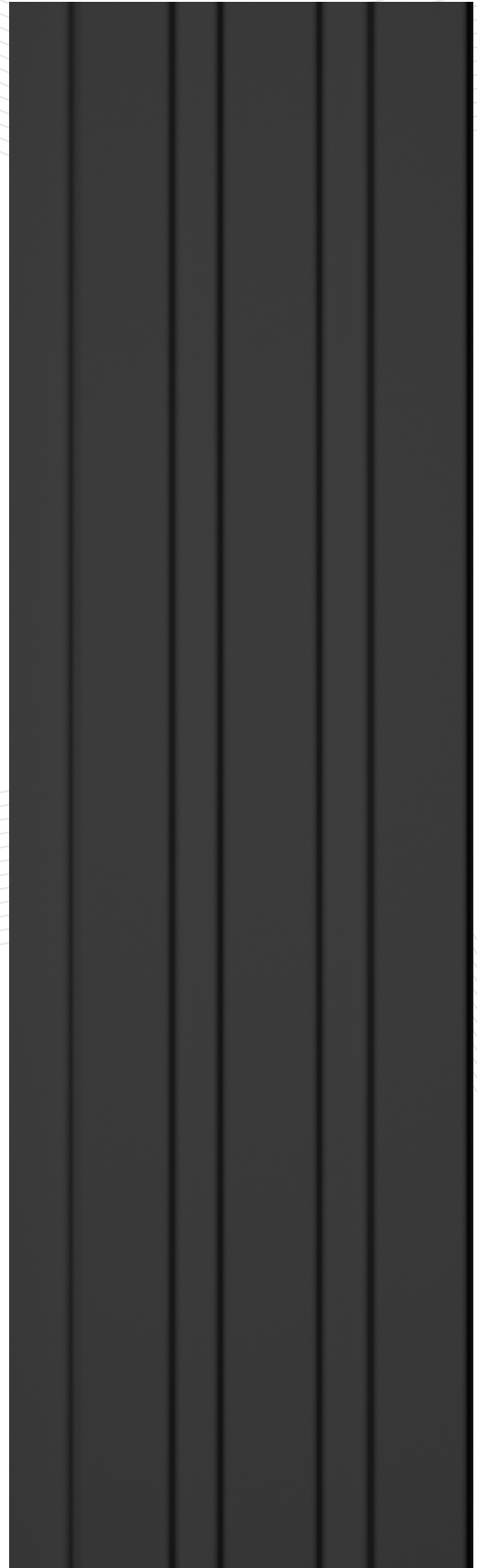
# The Pastel *Theory*

PT 5008



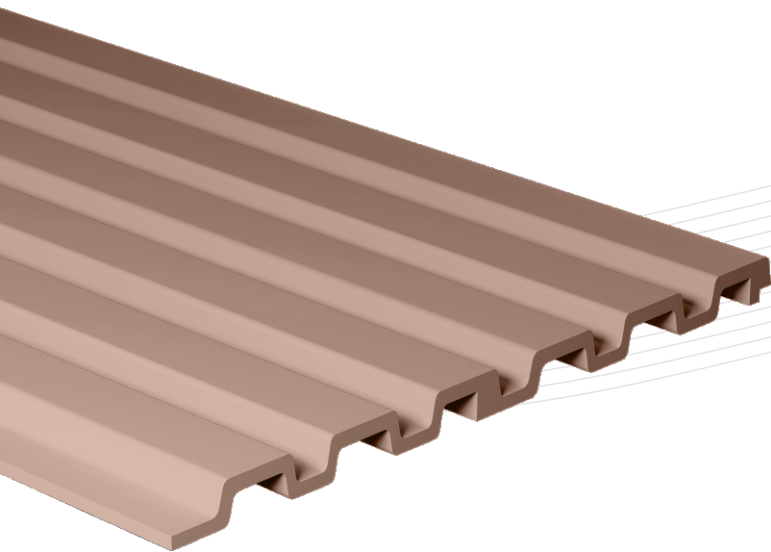
**2.9**  
Meter (H)  
**120**  
MM (W)

Thickness  
12mm (+/-5%)



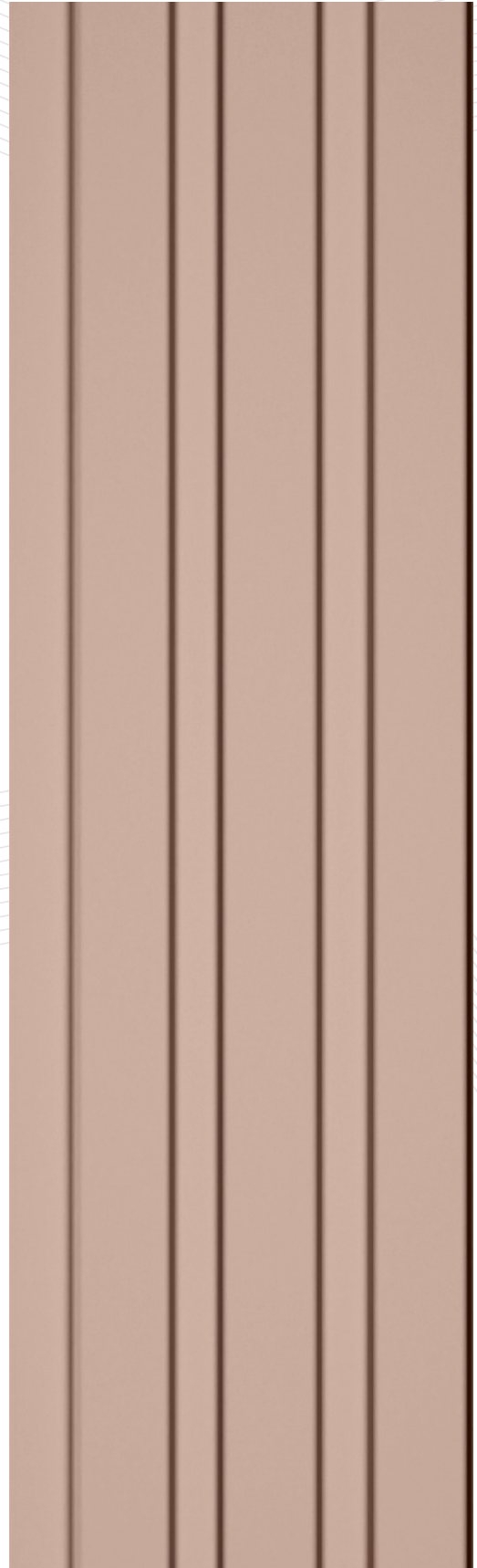
# The Pastel *Theory*

PT 5009



**2.9**  
Meter (H)  
**120**  
MM (W)

Thickness  
12mm (+/-5%)



# The Pastel *Theory*



**TERMITE-PROOF**



# Application

## Areas



RESIDENCES

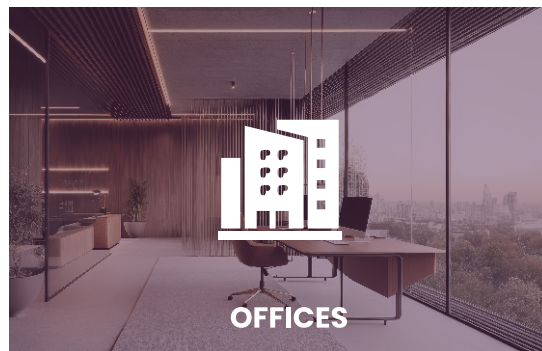
Pastel cladding are perfect for walls, ceilings, and partitions in homes, offices, hotels, and retail spaces adding a touch of elegance and durability to every interior.



HOTELS



HOSPITALS



OFFICES



EDUCATION CENTERS

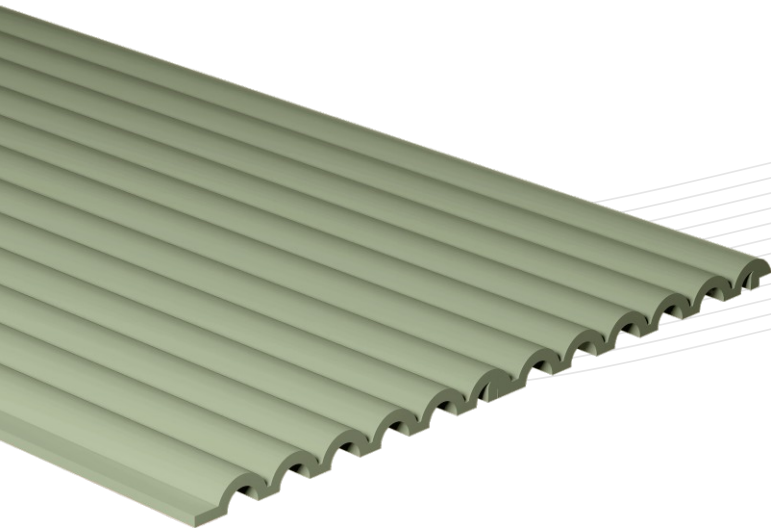


CINEMA HALLS

# The Pastel theory

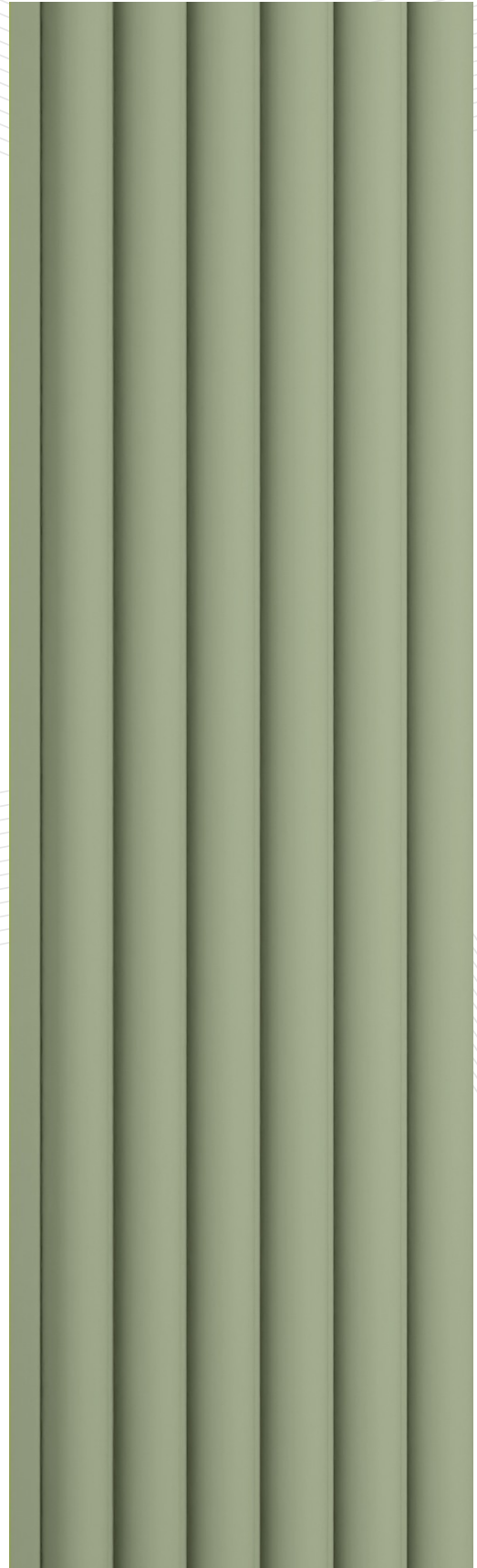
# The Pastel *Theory*

PT 5010



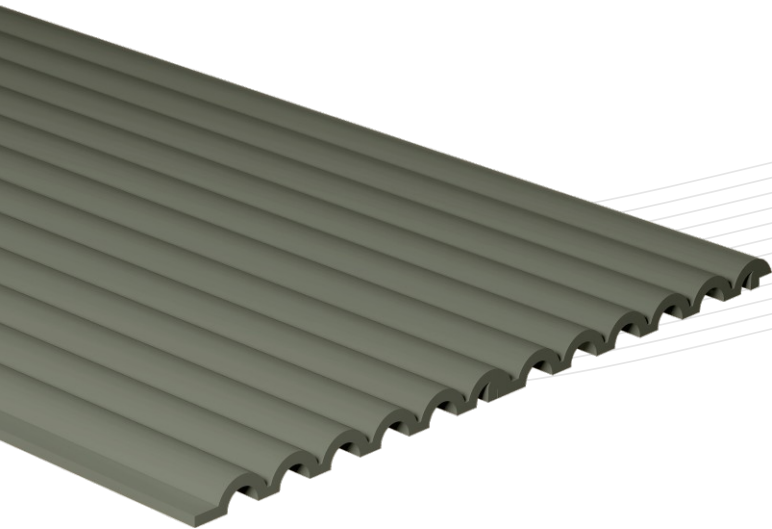
**2.9**  
Meter (H)  
**120**  
MM (W)

Thickness  
12mm (+/-5%)



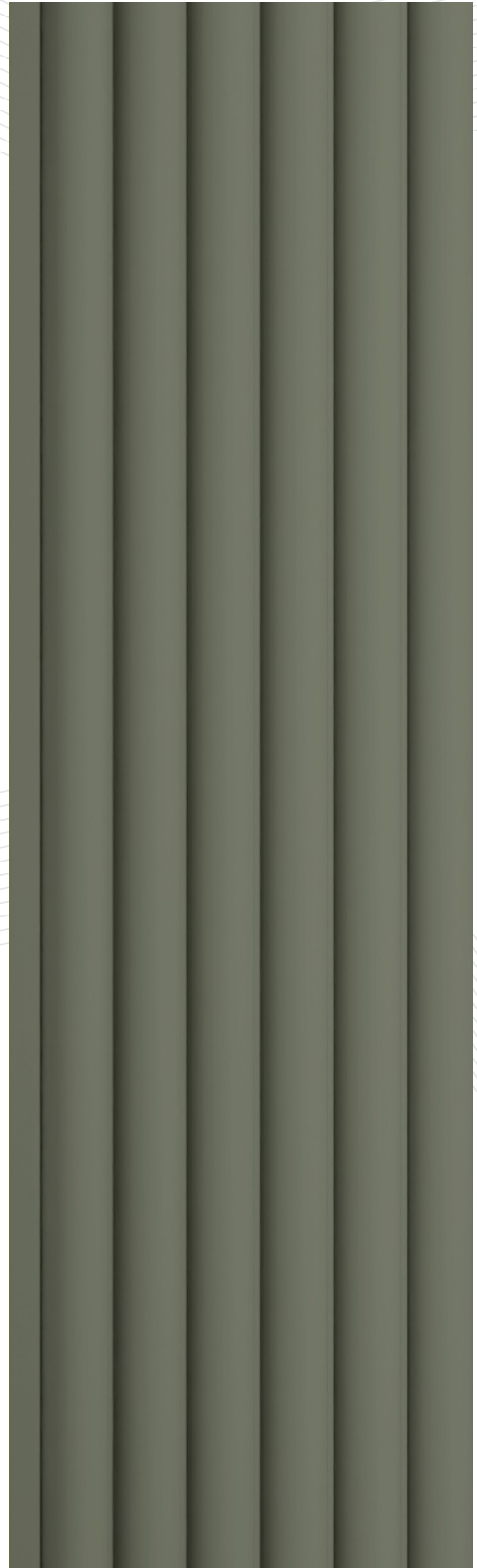
# The Pastel *Theory*

PT 5011



**2.9**  
Meter (H)  
**120**  
MM (W)

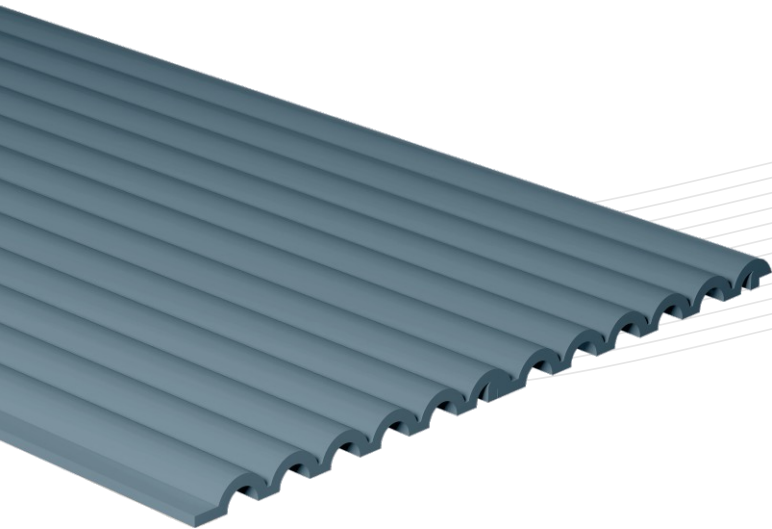
Thickness  
12mm (+/-5%)





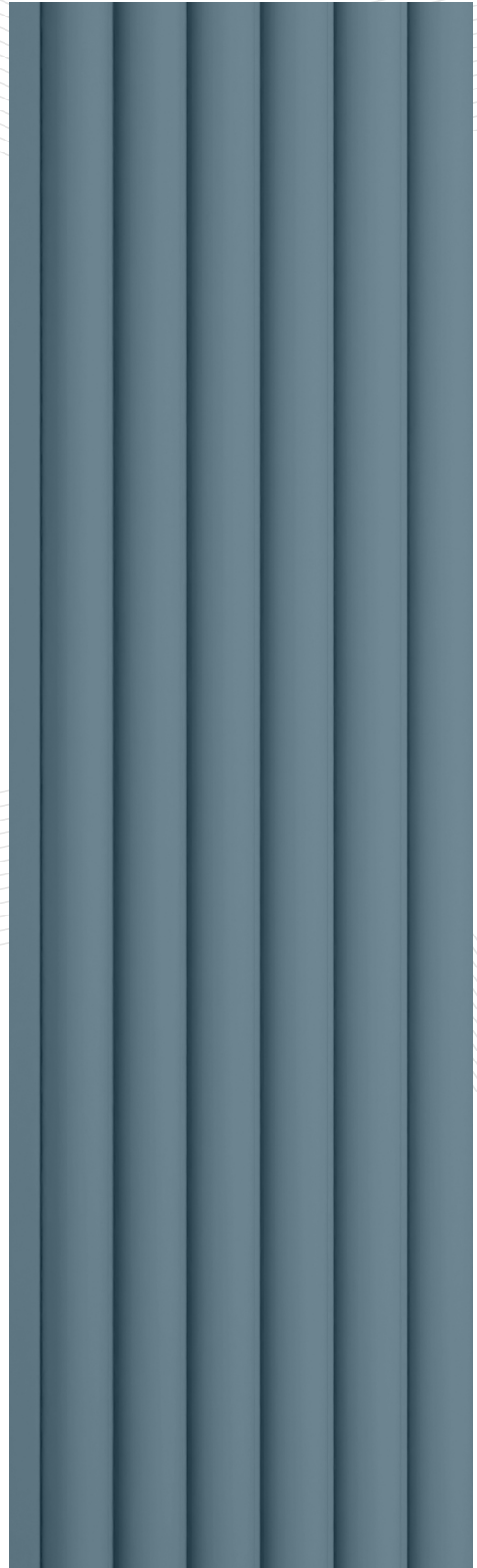
# The Pastel *Theory*

PT 5012



**2.9**  
Meter (H)  
**120**  
MM (W)

Thickness  
12mm (+/-5%)



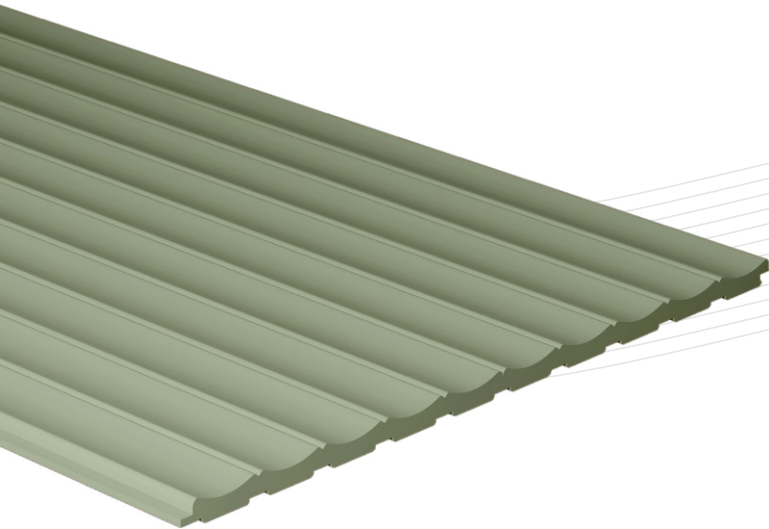
# The Pastel *Theory*



**WATER PROOF**

# The Pastel *Theory*

PT 5013



**2.9**  
Meter (H)  
**120**  
MM (W)

Thickness  
12mm (+/-5%)



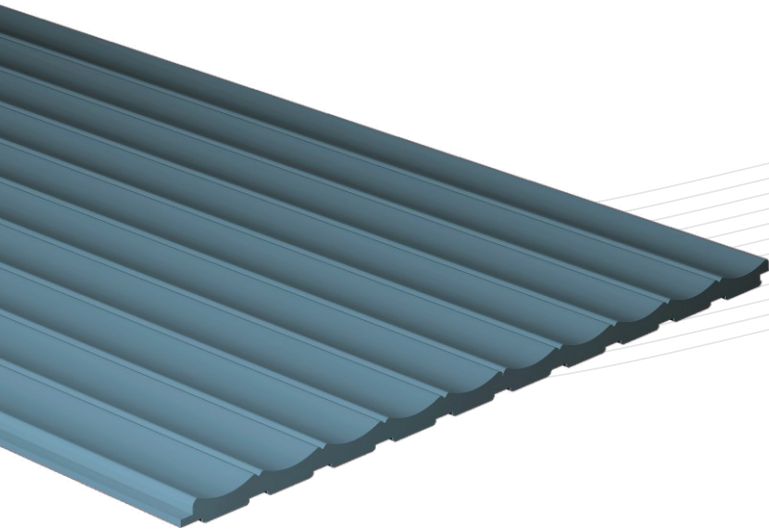
# The Pastel *Theory*



ECO-FRIENDLY

# The Pastel *Theory*

PT 5014

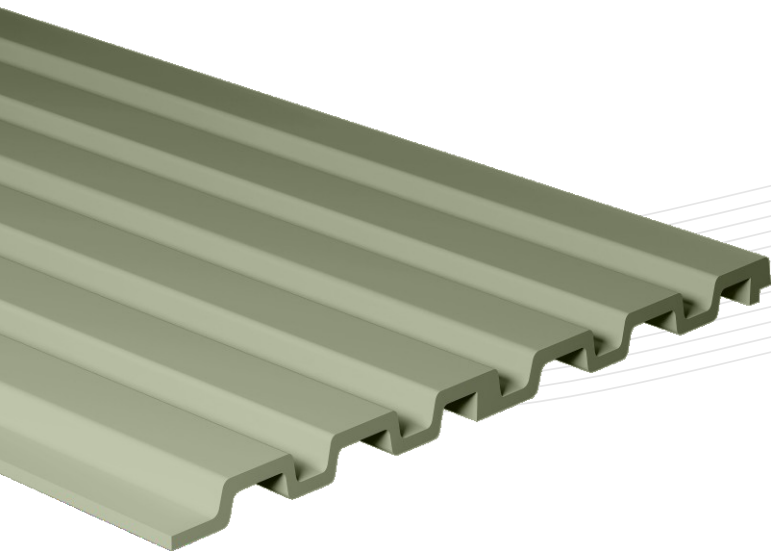


**2.9**  
Meter (H)  
**120**  
MM (W)

Thickness  
12mm (+/-5%)

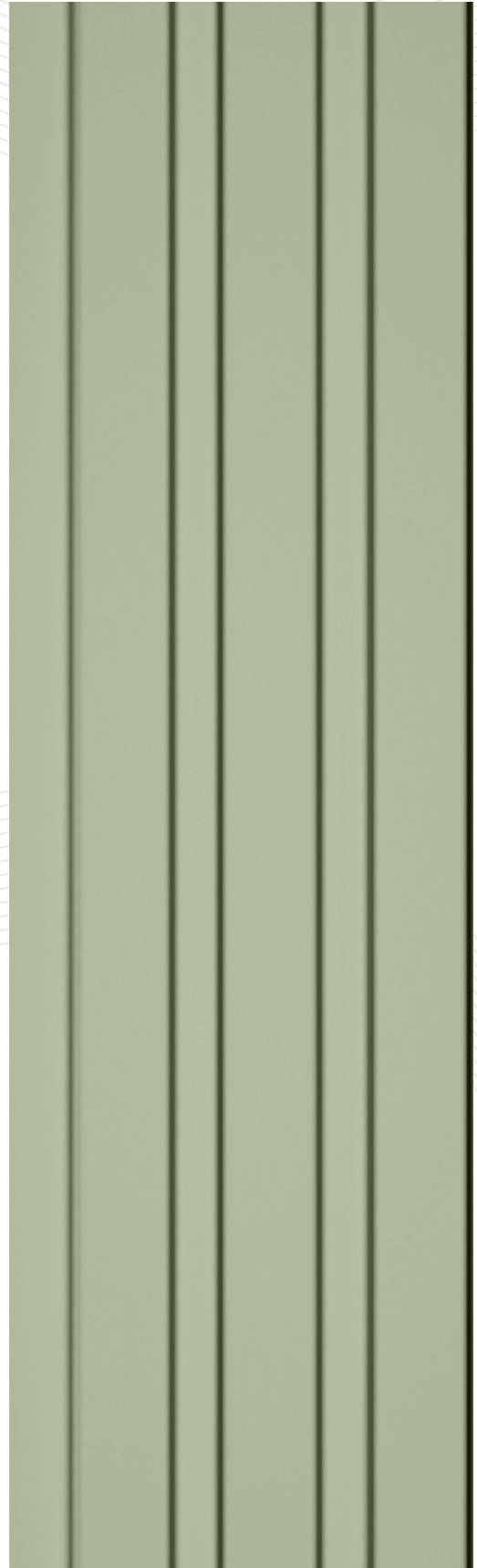
# The Pastel *Theory*

PT 5015



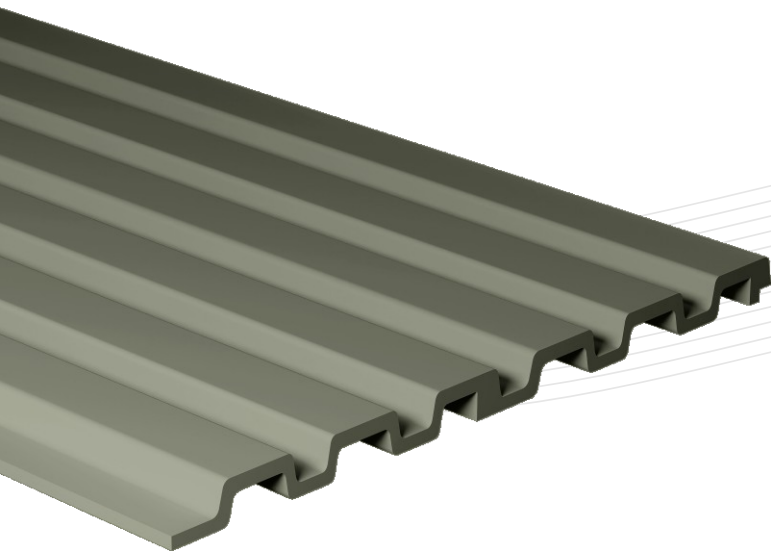
**2.9**  
Meter (H)  
**120**  
MM (W)

Thickness  
12mm (+/-5%)



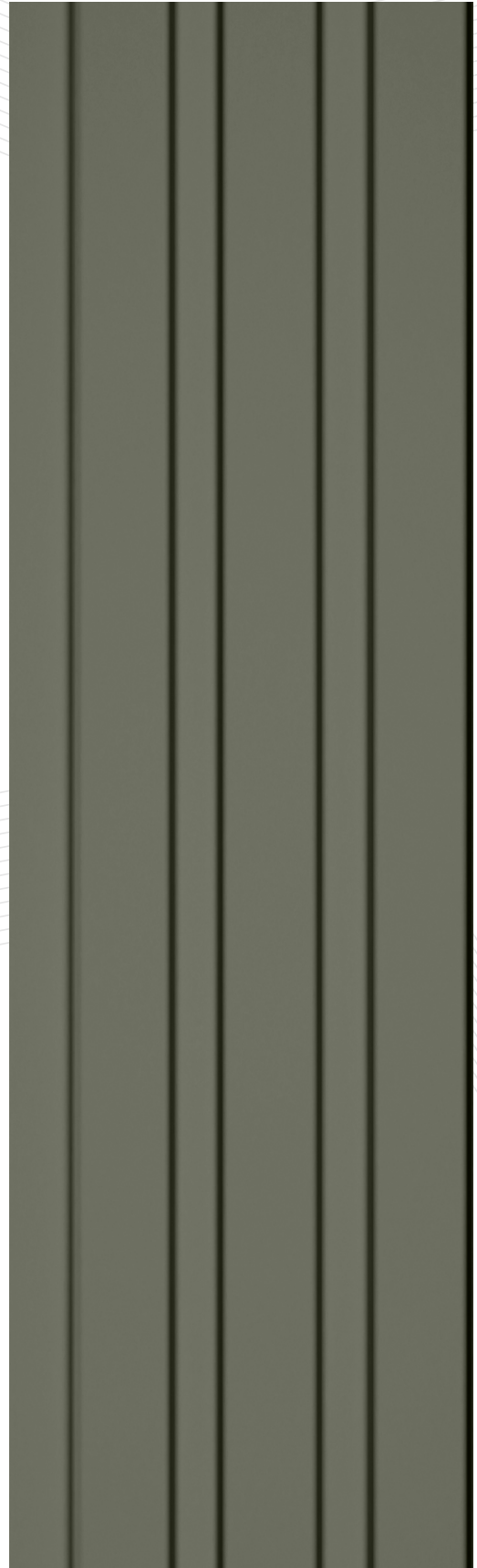
# The Pastel *Theory*

PT 5016



**2.9**  
Meter (H)  
**120**  
MM (W)

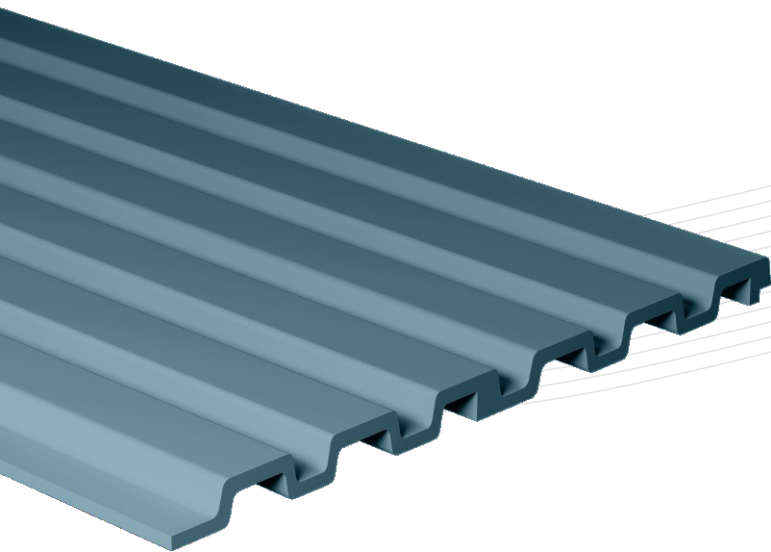
Thickness  
12mm (+/-5%)





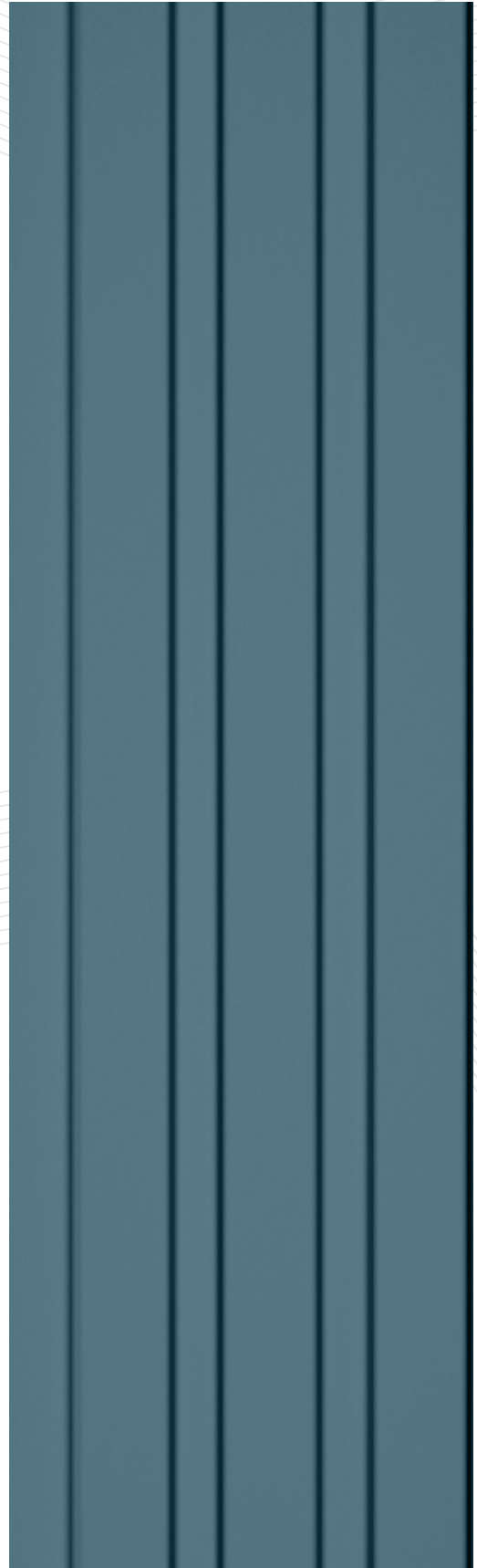
# The Pastel *Theory*

PT 5017

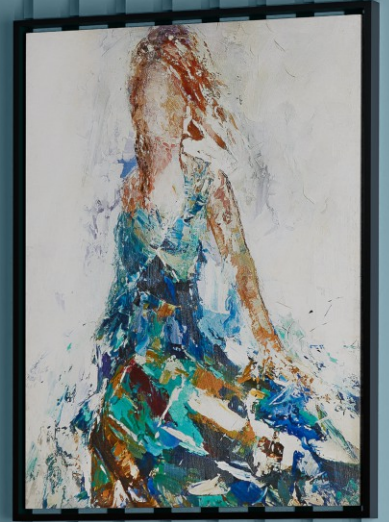


**2.9**  
Meter (H)  
**120**  
MM (W)

Thickness  
12mm (+/-5%)



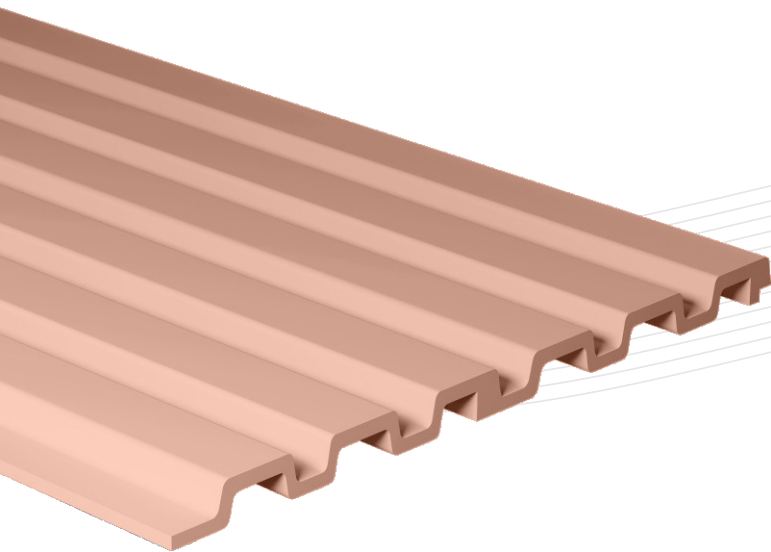
# The Pastel *Theory*



**ECO-FRIENDLY**

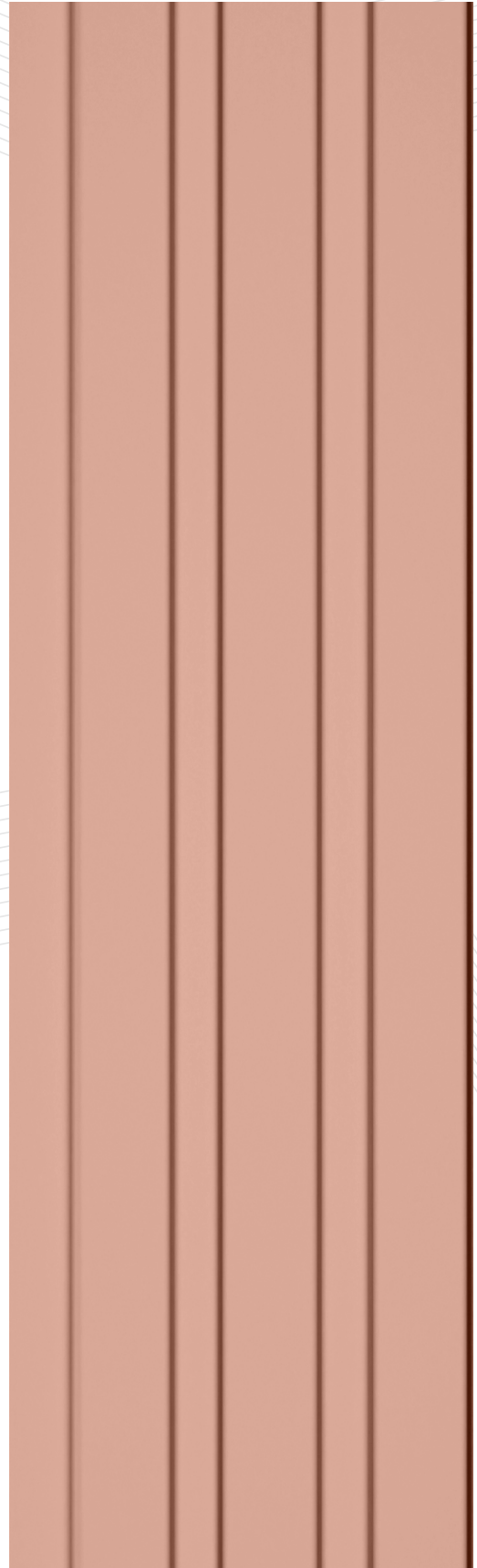
# The Pastel *Theory*

PT 5018



**2.9**  
Meter (H)  
**120**  
MM (W)

Thickness  
12mm (+/-5%)



# The Pastel *Theory*

By



**A-ONE DECOR**  
DESIGNING THE FUTURE

## CARE & CLEANING



### Regular Cleaning

Wipe with a soft dry or slightly damp cloth



### Mild Soap Only

Use mild soap and water for routine cleaning



### No Harsh Chemicals

Avoid strong cleaners, solvents, or abrasives



### No Scrubbing Pads

Do not use steel wool, hard brushes, or abrasive pads

Size :- 2.9 Meter Width :- 120mm (+/-5%)  
Thickness:- 12mm (+/-5%)

## DISCLAIMER

- Color, texture, and finish variations may occur between different production batches.
- Customers are advised to plan and order full requirements together for best consistency.
- The company accepts no liability for damages, misuse, or improper installation.
- The Pastel Theory products are sold without any guarantee or warranty.
- Fire-retardancy is tested under controlled laboratory conditions; performance may vary in actual site conditions.
- Designs and specifications are subject to change without prior notice.
- The Pastel Theory Louvers are designed for interior applications only and are not recommended for outdoor or exterior use.

2/28-30 Essington Street Mitchell ACT 2911, Australia

Email: [info@aonedecor.com.au](mailto:info@aonedecor.com.au)

Cell: +61 478 914 228 | Cell: +61 434 665 201

[www.aonedecor.com.au](http://www.aonedecor.com.au)